

FREE GUIDE FROM TREELINELOCAL

Storm-Prep Tree Checklist

Inspect and prepare your trees before storm season — and know exactly what to do safely when a storm hits.



Understand your tree job with open eyes — then get matched, free, with licensed, insured tree companies near you. You compare estimates and choose who to hire.

Before the storm: inspect your trees

- Look for leaning trunks or trees that have shifted in the soil
- Spot dead, hanging, or broken limbs (especially over the house)
- Check for large cracks in the trunk or major branches
- Watch for mushrooms or fungus at the base — a sign of rot
- Note any tree growing into or near a power line

Get the risky work done early

- 1 Have an ISA-certified arborist assess any tree you're unsure about.
- 2 Schedule pruning of weak or overhanging limbs before storm season.
- 3 Remove clearly hazardous or dead trees while it's calm and cheaper.
- 4 Keep a list of licensed, insured tree companies you'd call.



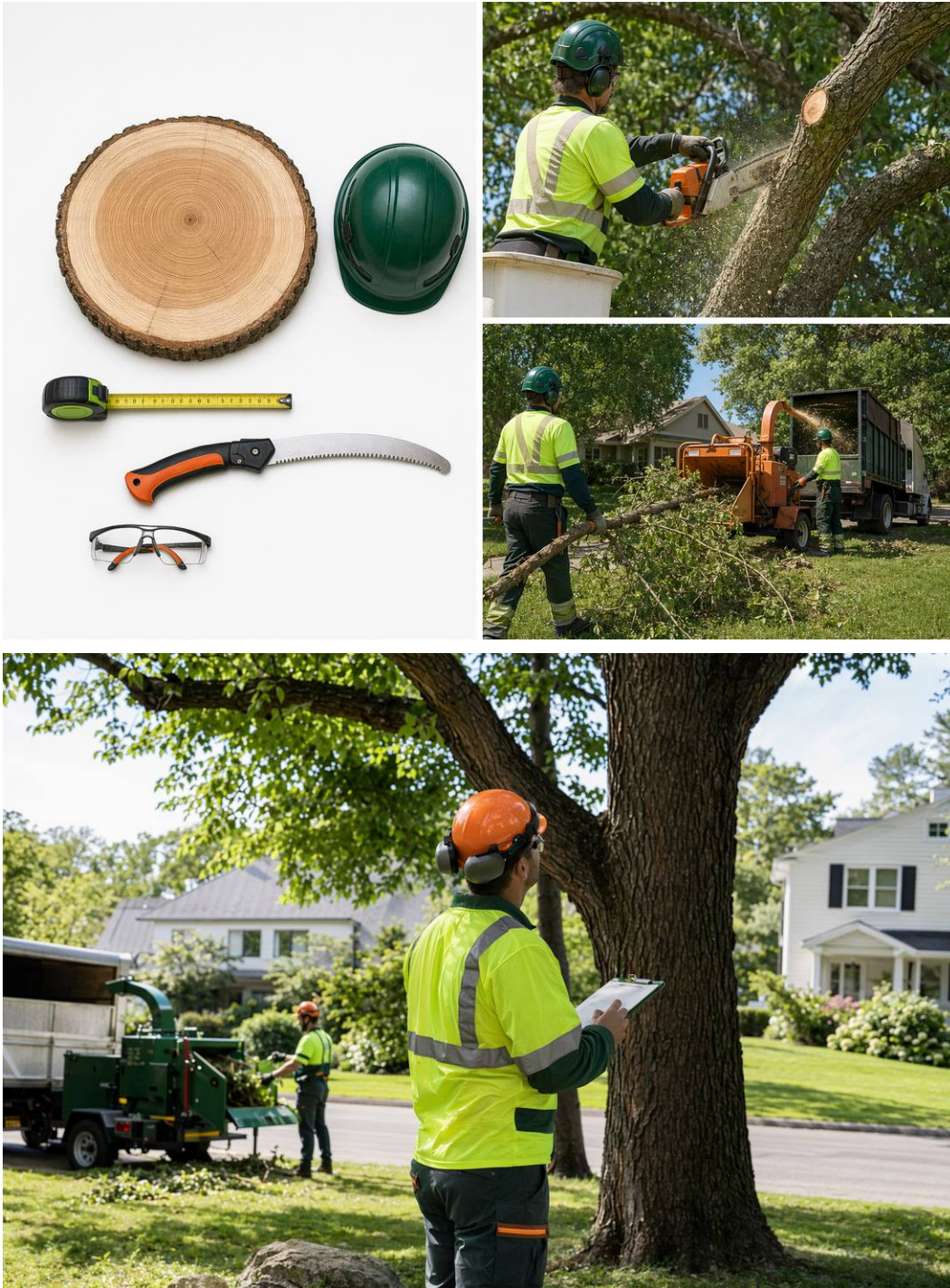
The moment a storm hits: stay safe

- Treat every downed line as live — stay far back and keep others away
- If a tree is on a power line or your home, call the utility and 911 first
- Do not try to cut or move a large tree yourself
- Stay inside until it's clearly safe to go out

After the storm: do it in order

- 1 Confirm everyone is safe and lines are clear before going near a tree.
- 2 Take photos of the damage for your insurance.
- 3 Call your insurer to start a claim if a tree hit a structure.
- 4 Get matched with a licensed, insured emergency crew — avoid cash-only door-knockers.
- 5 Get the scope and price in writing before work starts.





Important

TreelineLocal is a free matching service, not a tree-care company, arborist, or licensed contractor. Tree work is dangerous, high-liability work — always hire licensed, insured tree companies, verify the license and insurance (liability and workers' compensation) yourself before any work, and prefer ISA-certified arborists for assessments. Cost figures are typical ranges and estimates, not quotes or guarantees; your real price depends on the size and species of the tree, its location and access, hazards, debris haul-away, and your area. Never approach a downed or leaning tree near a power line — stay back, keep others away, and call your utility company and 911 first.