

FREE GUIDE FROM TREELINELOCAL

Tree-Company Vetting Checklist

Every license, document, and question to clear before you let a tree company touch your property.



Understand your tree job with open eyes — then get matched, free, with licensed, insured tree companies near you. You compare estimates and choose who to hire.

Why this matters more for tree work

Tree work is one of the most dangerous home services there is. If an uninsured worker is hurt on your property, you can be on the hook. A few checks protect your home, your wallet, and the crew.

Before you let anyone quote

- Confirm they are licensed where required in your state or city.
- Confirm they carry liability insurance AND workers' compensation.
- Verify both yourself — ask for the certificate and check it is current.
- Prefer a company with an ISA-certified arborist on staff.



Documents to collect

- 1 Certificate of liability insurance (current dates).
- 2 Proof of workers' compensation for the crew.
- 3 ISA certification or local license, if applicable.
- 4 Recent references for similar tree jobs.
- 5 A written, itemized estimate and scope.

Questions worth asking

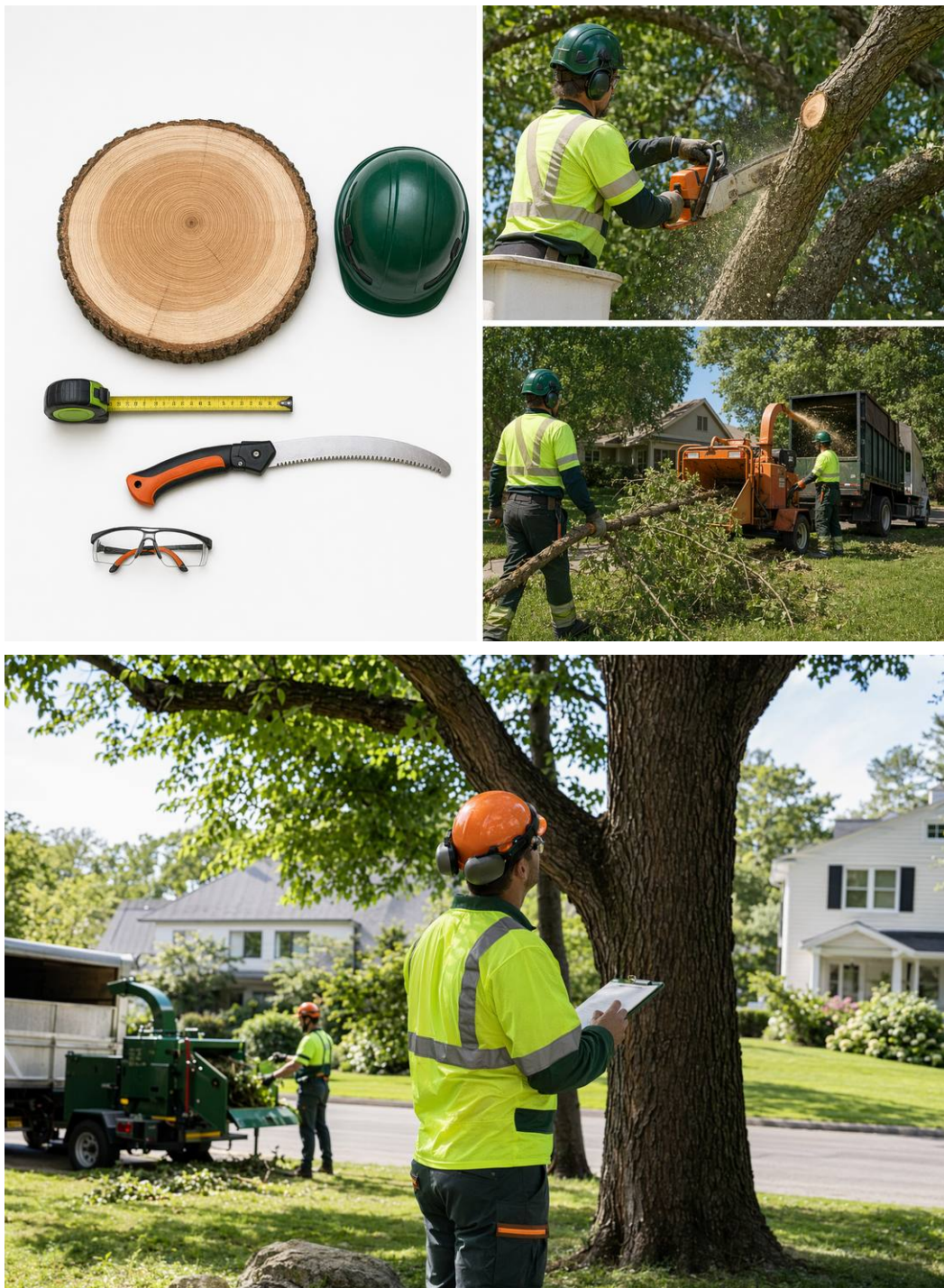
- Is the stump grinding included, or quoted separately?
- Is hauling away the wood and brush included?
- Will you protect the lawn, fence, and driveway?
- Who is responsible if a limb damages my house?
- Do I need a permit, and who handles it?



Red flags — slow down

- A door-knocker right after a storm demanding cash up front.
- No insurance, no workers' comp, or refusal to show them.
- No written estimate or a vague one-line quote.
- Pressure to 'decide right now' for a discount.
- A price far below everyone else's — corners get cut.





Important

TreelineLocal is a free matching service, not a tree-care company, arborist, or licensed contractor. Tree work is dangerous, high-liability work — always hire licensed, insured tree companies, verify the license and insurance (liability and workers' compensation) yourself before any work, and prefer ISA-certified arborists for assessments. Cost figures are typical ranges and estimates, not quotes or guarantees; your real price depends on the size and species of the tree, its location and access, hazards, debris haul-away, and your area. Never approach a downed or leaning tree near a power line — stay back, keep others away, and call your utility company and 911 first.