

FREE GUIDE FROM TREELINELOCAL

Tree-Work Cost Worksheet

A simple worksheet to estimate what your tree job might cost — before you talk to a single company.



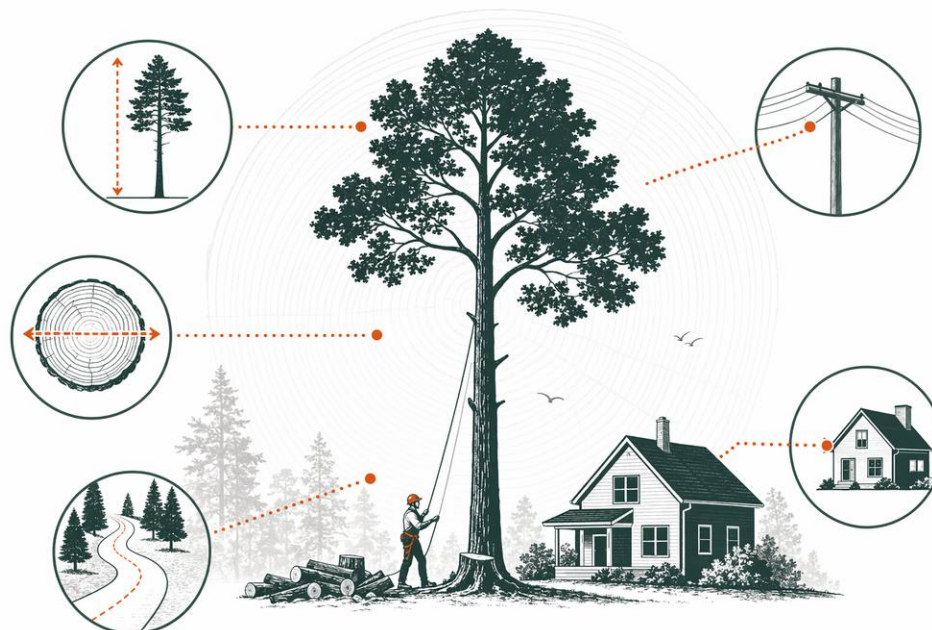
Understand your tree job with open eyes — then get matched, free, with licensed, insured tree companies near you. You compare estimates and choose who to hire.

Start with the job

The kind of job sets your starting price. These are typical US ranges — estimates, not quotes. Your real number depends on the size and species of the tree, its location and access, hazards, and debris haul-away.

Typical ranges by job

Tree job	Typical range	What drives the price
Tree removal	\$400–\$2,000+	Height, diameter, access, near house/lines
Trimming / pruning	\$250–\$1,200	Tree size, how much is cut, access
Stump grinding	\$100–\$500	Stump diameter, root spread, debris
Emergency / storm	\$500–\$5,000+	Hazard, after-hours, crane, haul-away



What raises the price

- A tall or wide tree, or a hard species like oak
- A tree close to your house, a fence, or a power line
- Tight access — no room for a bucket truck or crane
- Hauling away the wood and brush
- Grinding the stump (often quoted separately)
- After-hours or storm emergencies

Easy-to-forget extras

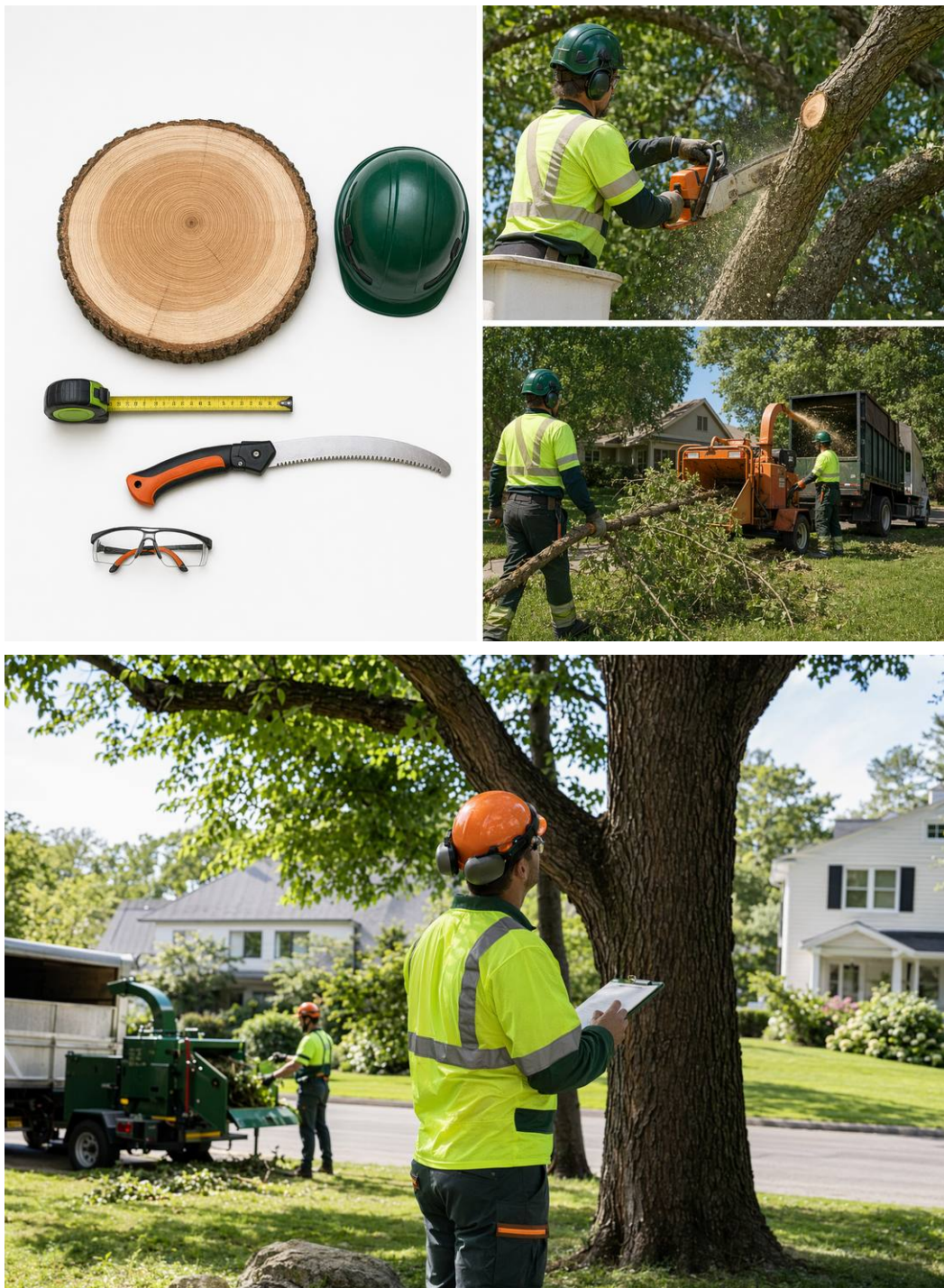
- Stump grinding if it isn't in the removal price
- Debris and brush haul-away vs. leaving the logs
- Permits if the tree is protected by your city
- Repairing ruts in the lawn from equipment



Your worksheet

- 1 Write the job's starting range from the table above.
- 2 Note the tree's rough height and trunk width.
- 3 Note what's nearby: house, fence, power line, tight access.
- 4 Decide if you want the stump ground and the debris hauled.
- 5 Take this to each company and ask for a written estimate against it.





Important

TreelineLocal is a free matching service, not a tree-care company, arborist, or licensed contractor. Tree work is dangerous, high-liability work — always hire licensed, insured tree companies, verify the license and insurance (liability and workers' compensation) yourself before any work, and prefer ISA-certified arborists for assessments. Cost figures are typical ranges and estimates, not quotes or guarantees; your real price depends on the size and species of the tree, its location and access, hazards, debris haul-away, and your area. Never approach a downed or leaning tree near a power line — stay back, keep others away, and call your utility company and 911 first.